

Distribution in the UK & Ireland



www.lambdaphoto.co.uk

# Manta HM

High Magnification

Automated microscope for inspection of single and multi-fiber patch cords, bulkhead and QSFP modules

Up to 96 fibers  
in one screen  
(FOV: 4.2 × 2.8 mm)

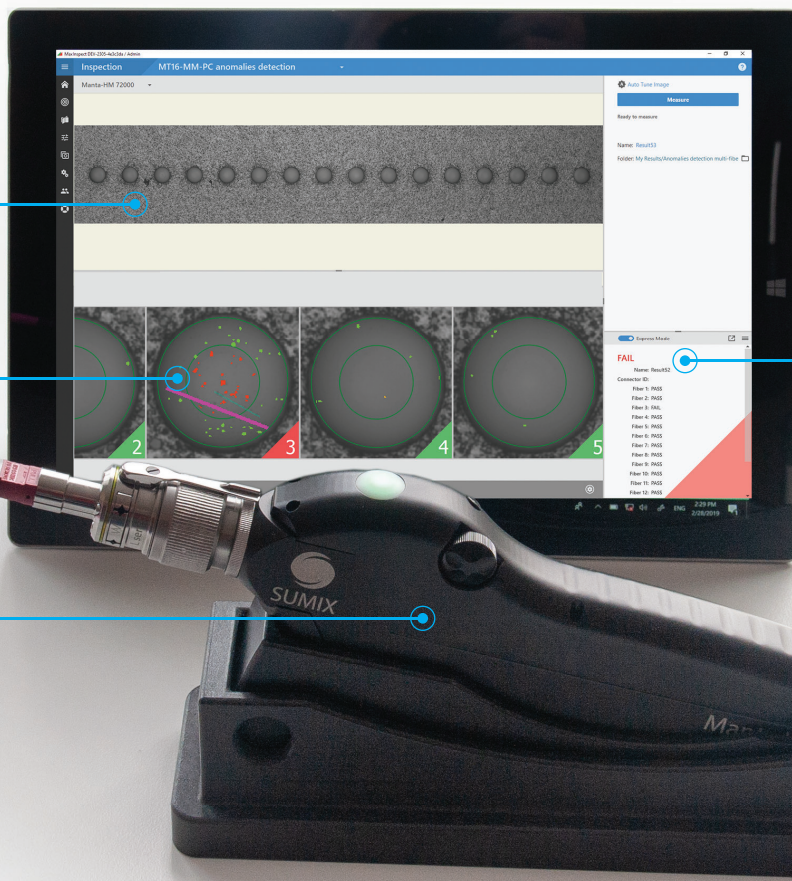
360× magnification

Autofocus

Pass/Fail  
verdict per IEC  
standards



20 MP sensor inside



## Compact in size, big on capability

### Unsurpassed optical performance\*

High-contrast precision optics, optimal axial illumination and 20MP sensor provide for accurate measurements of small anomalies.

\*among handheld microscopes for multi-fiber inspection with a similar FOV.

### Large field of view

Pass/Fail analysis of an MPO connector is done in a single scan taking just 3 seconds (for MPO12/16).

Guide holes and ferrule surface are inspected at the same magnification as fibers.

### Versatility from bench to patch panel

Manta HM can be used as a handheld probe for testing transceivers and bulkhead connectors in patch panels, as well as a benchtop solution for production lines and labs.

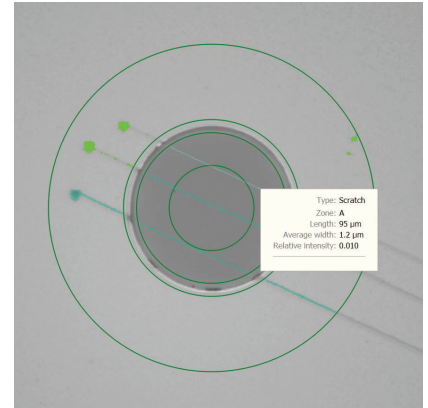


**Application:** production lines, laboratories, incoming inspection, maintenance in data-centers.

**Recommended for:** high-power laser applications, single mode connector inspection, final verification, and other cases where small details matter.

# Specification

<b>Connectors inspected:</b>	Male and female MPO connectors (SM and MM), MT ferrules, LC, FC, SC, E2000™, QSFP, ARINC, MIL-38999, High-power SMA, Avim, mini-Avim, 3M™ Expanded Beam Optical Connector, ODC®, Q-ODC®, MXC®, HMFOC, CS®, SN® and more
<b>Measurement time*:</b> * doesn't include autofocusing time	2.6 sec for MT12, 3.5 sec for MT16, 4.5 sec for MT24, 10 sec for MT72
<b>Field of view:</b>	4.2 × 2.8 mm
<b>Defect size detection:</b>	0.5 μm
<b>Effective resolution:</b>	1.5 μm (based on MTF calculations)
<b>Magnification:</b>	0.75 μm/px or 360× (for a 24" display 1920x1080)
<b>Focus:</b>	Autofocus
<b>Camera type:</b>	CMOS, 20MP, monochrome
<b>Power source:</b>	USB 3.0 port of PC
<b>Dimensions (H × W × L):</b>	77 × 36 × 246 mm (3 × 1.4 × 9.8 inches)
<b>Weight:</b>	491 g (1.08 lbs)
<b>Material:</b>	aluminum housing, stainless steel barrel
<b>Compatible with:</b>	desktop PC, laptop, tablet, Android phone
<b>Operating system:</b>	Windows 10, Windows 11
<b>Software integration tools:</b>	Excel/CSV, SQL, WebSocket API
<b>Centralized data-base connectivity:</b>	Yes
<b>Compliance with IEC requirements:</b>	Yes



Scratches detected on SF end face

Measurement result for a 24-fiber MPO connector