



Measurably better value

Test Bridge SMU Installation

Application Note

Products:

Test Bridge SMU Software

This document contains instructions on how to install the Aim-TTi Test Bridge SMU Software program, available to download from www.aimtti.com/support. Installation can be completed either with or without an internet connection, see '*Online Installation*' or '*Offline Installation*' for more details.

Distribution in the UK & Ireland



Lambda Photometrics Limited
Lambda House Batford Mill
Harpenden Herts AL5 5BZ
United Kingdom
E: info@lambdaphoto.co.uk
W: www.lambdaphoto.co.uk
T: +44 (0)1582 764334
F: +44 (0)1582 712084

Pre-installation

Install the latest version of .NET Desktop 6 (x86 version) ① from here:
<https://dotnet.microsoft.com/en-us/download/dotnet/6.0>

.NET Desktop Runtime 6.0.10

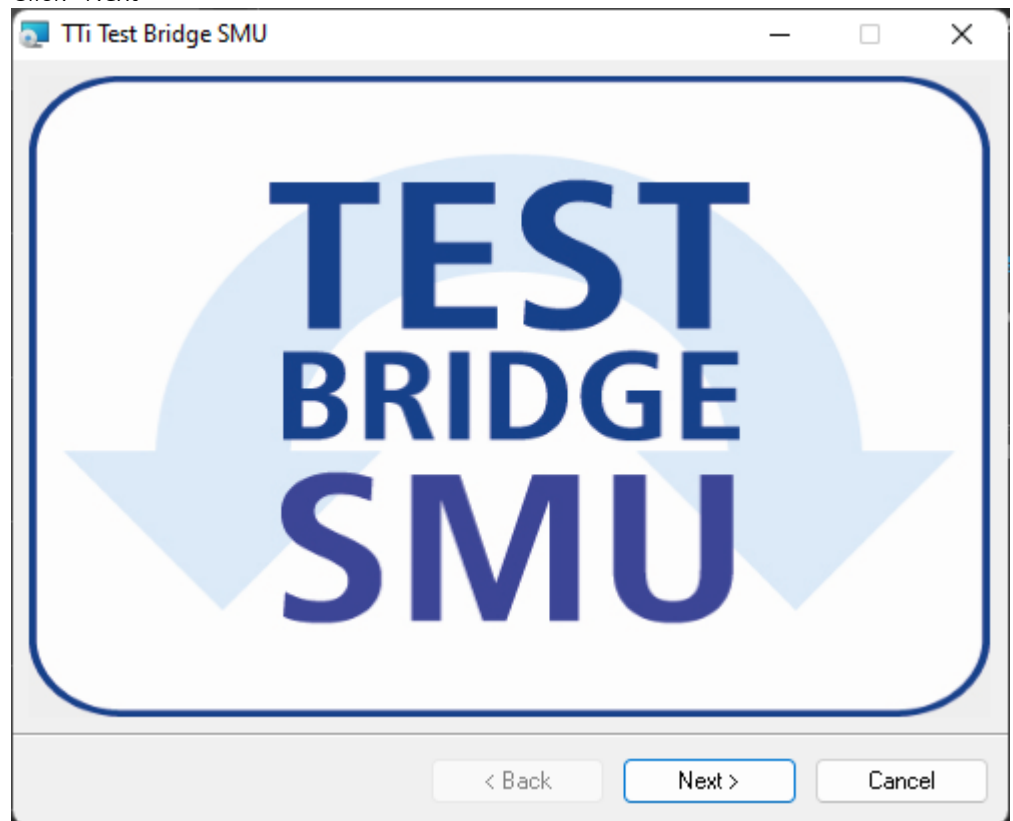
The .NET Desktop Runtime enables you to run existing Windows desktop applications. **This release includes the .NET Runtime; you don't need to install it separately.**

OS	Installers	Binaries
Windows	Arm64 x64 x86 winget instructions	

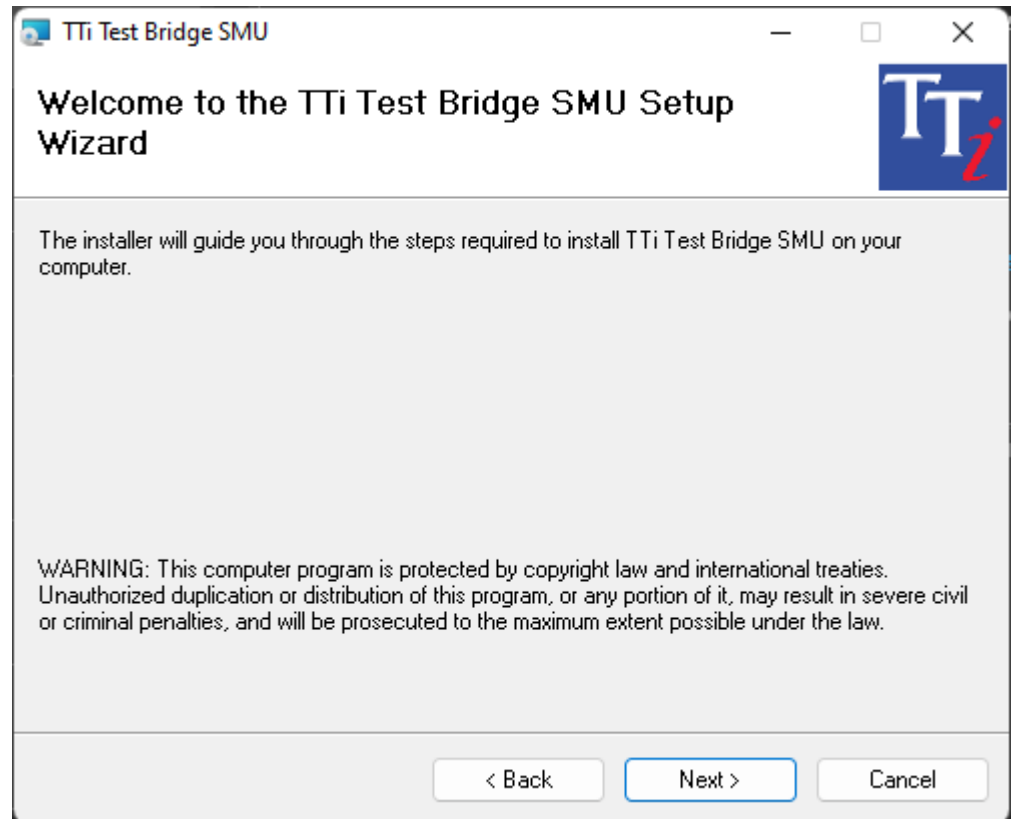
Online Installation

The PC must be connected to the internet for this to complete successfully as it will download the latest version of the Microsoft WebView2 component during the installation.

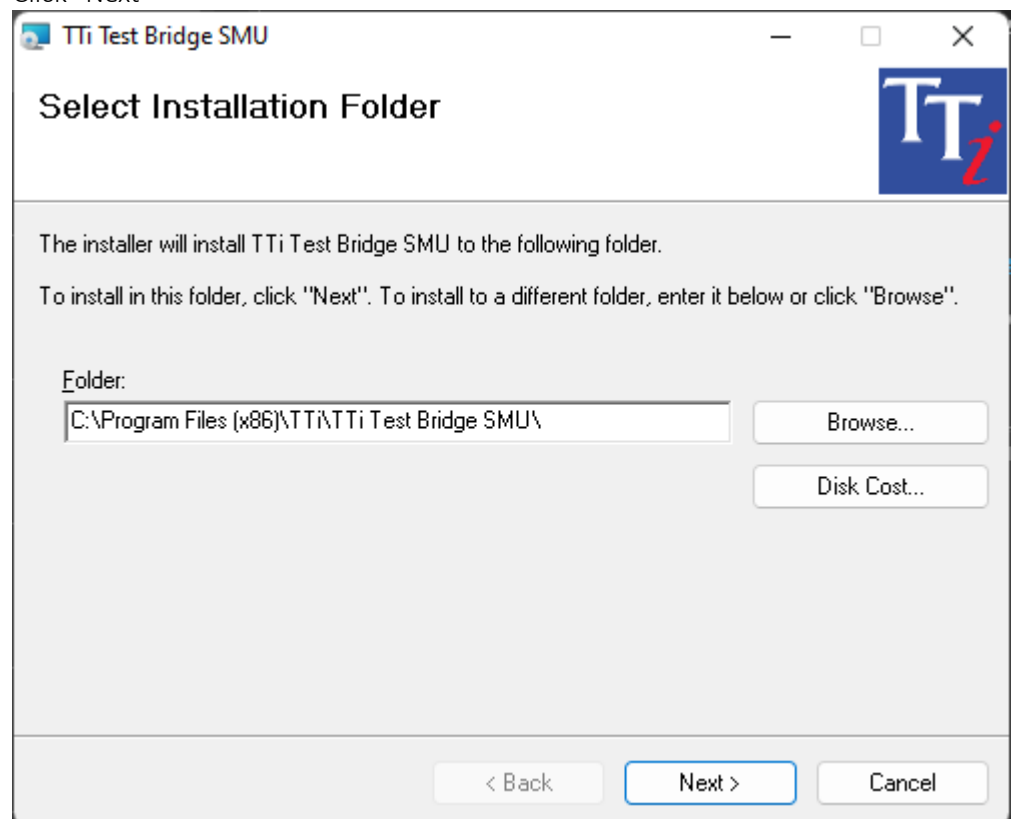
- Run the Test Bridge SMU installer
- Click “Next”



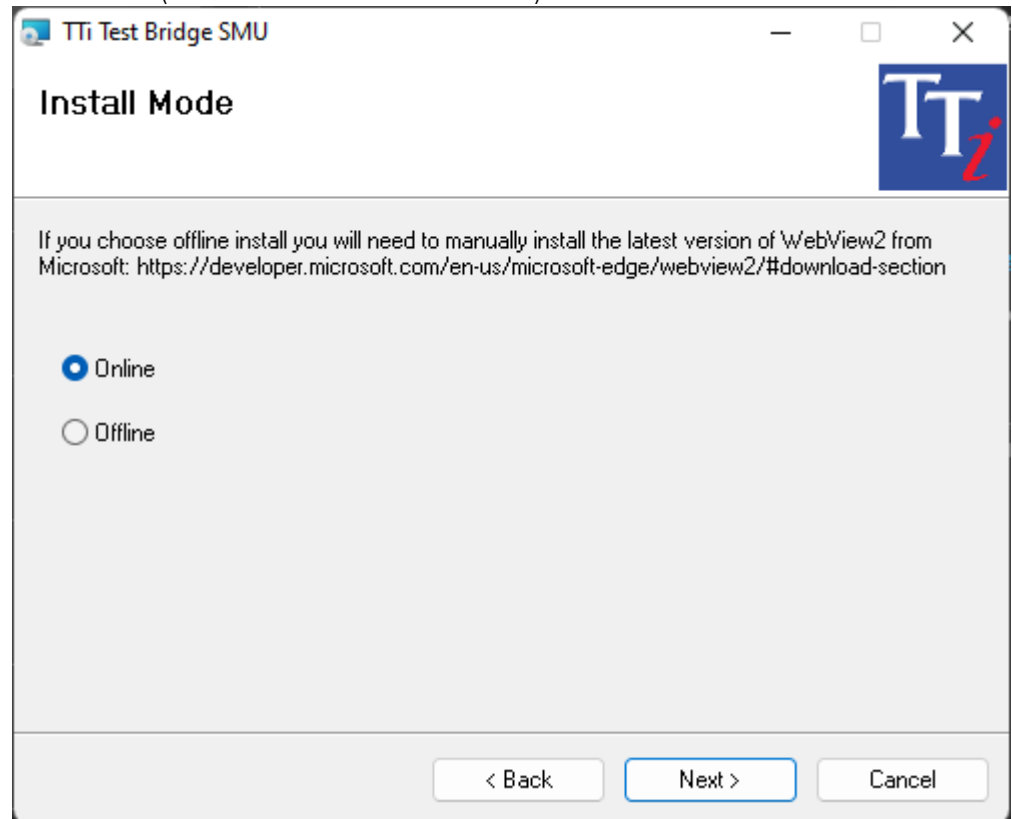
Click "Next"



Click "Next"



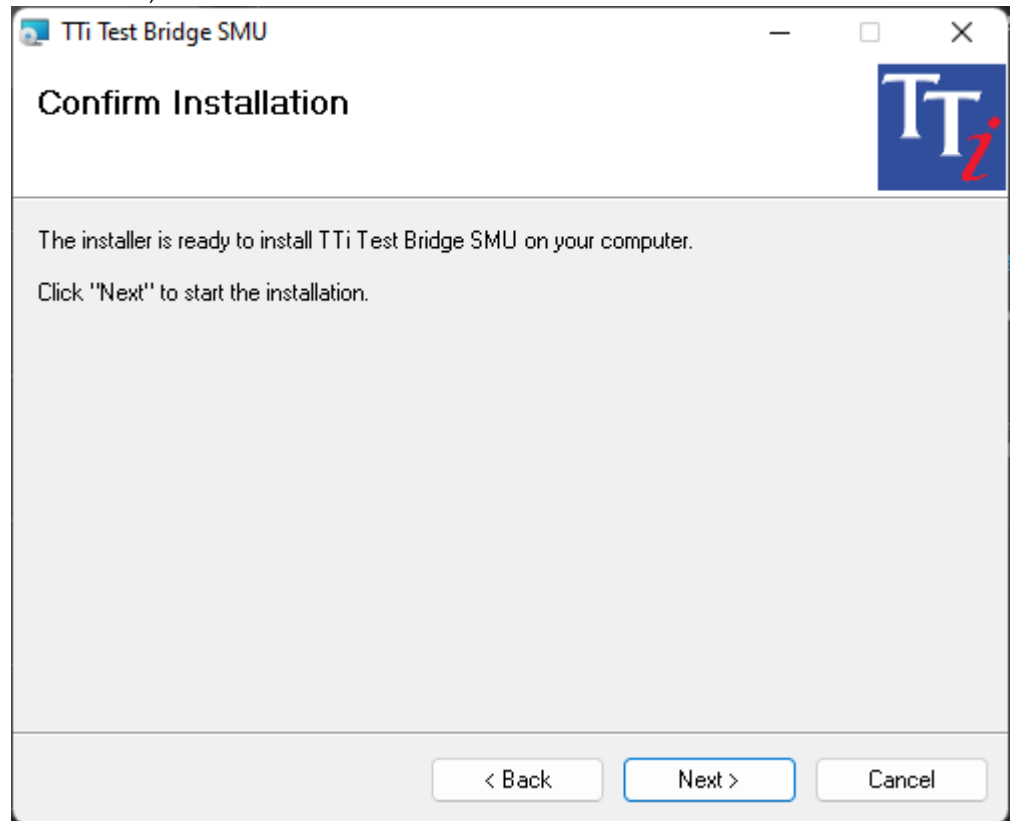
Click "Next" (leave the selection on "Online")



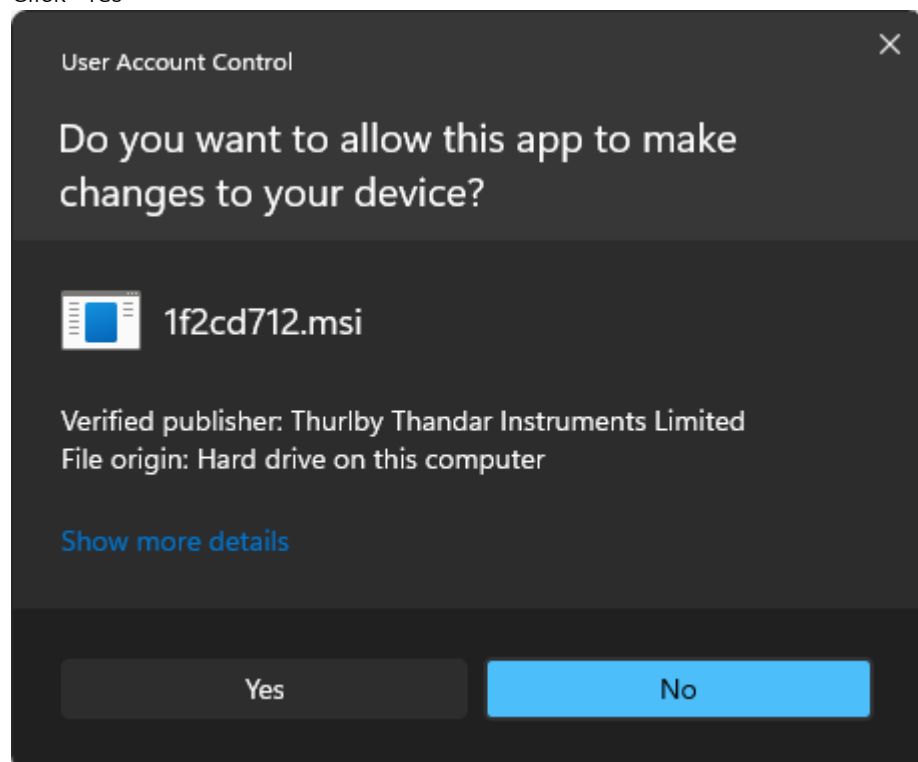
Select "I Agree" and click "Next"



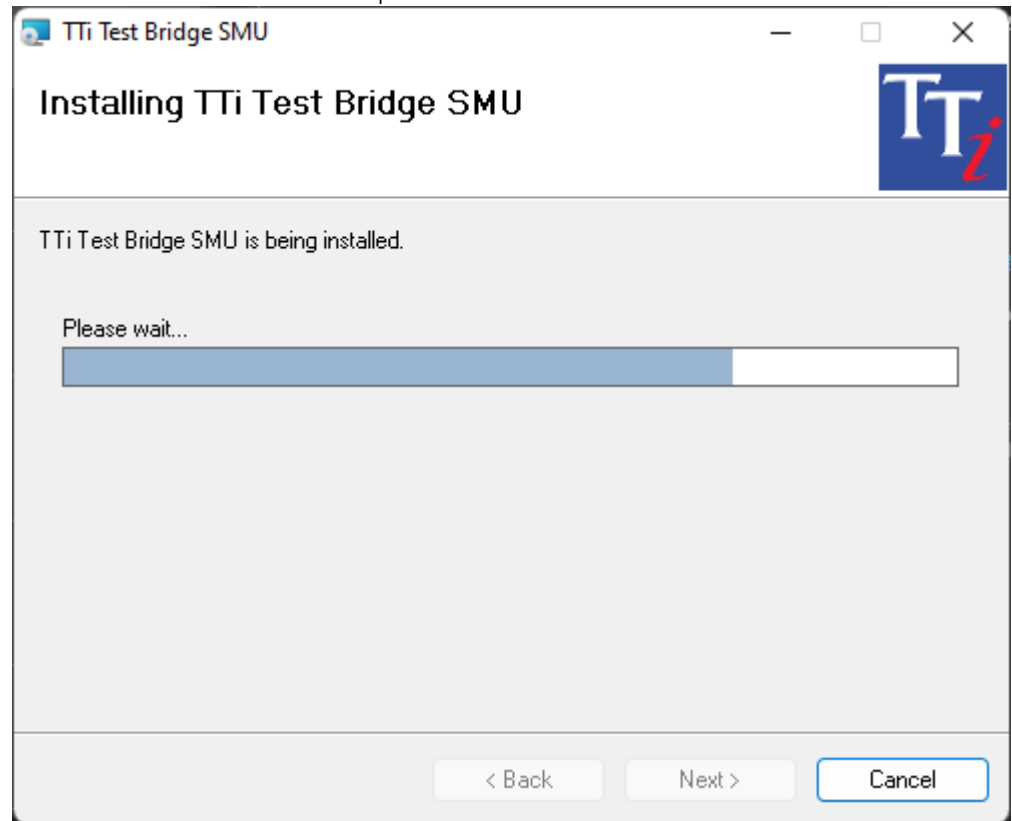
- Click "Next", this will start the installation



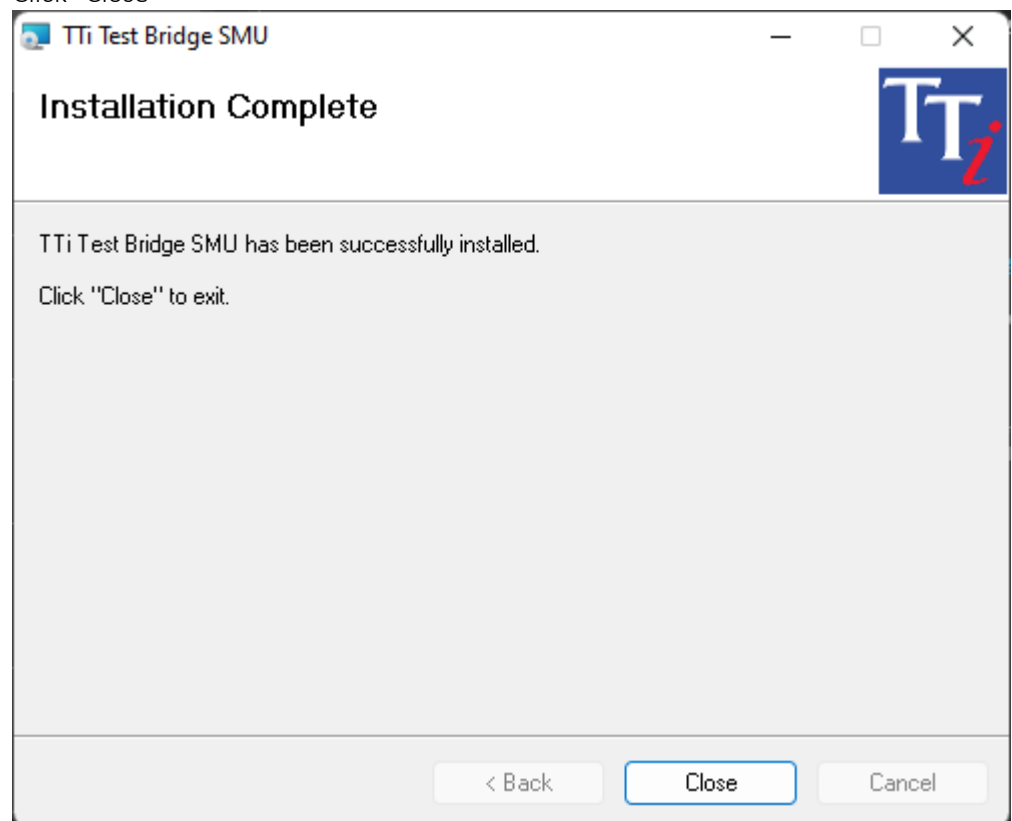
- Click "Yes"



Wait for the installation to complete

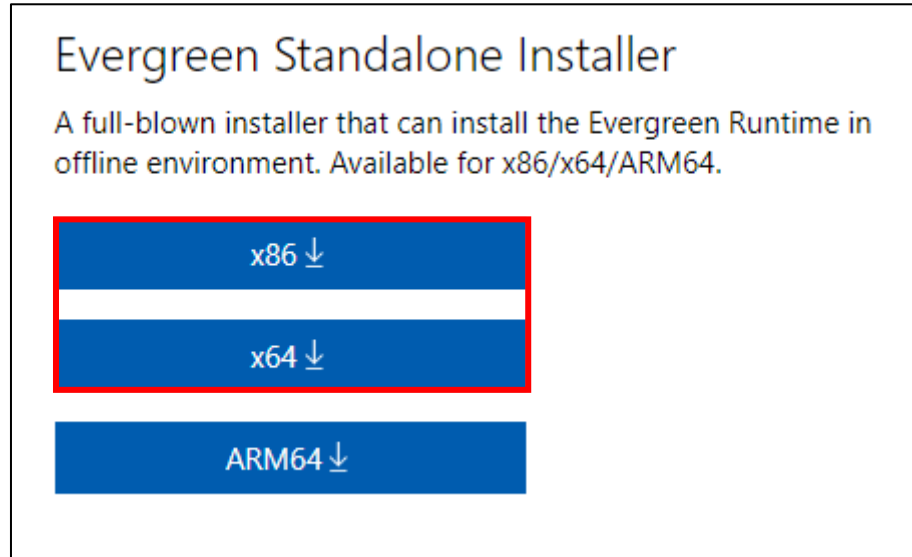


Click "Close"

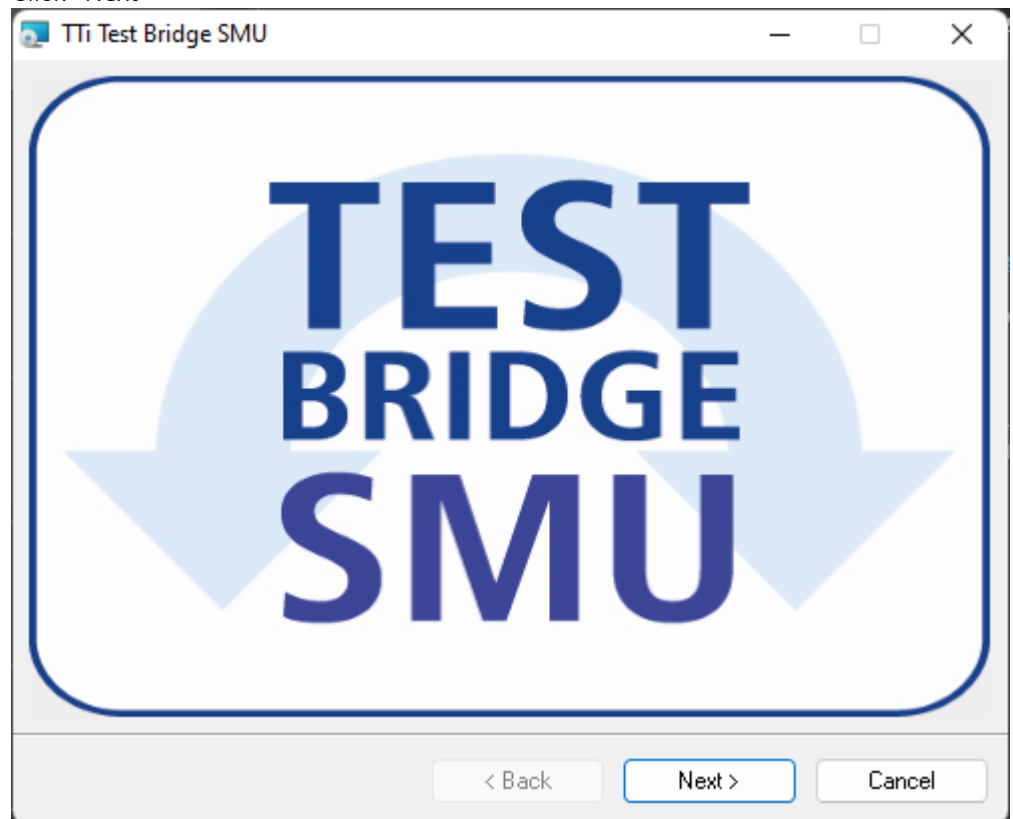


Offline Installation

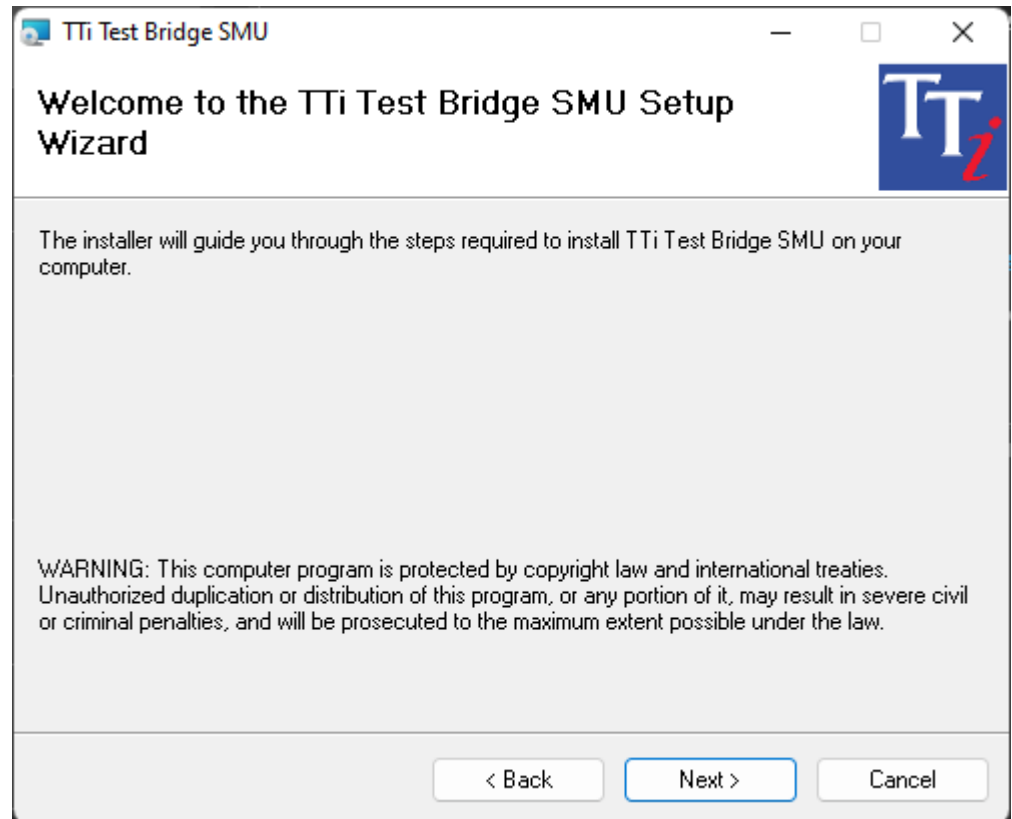
- Download and install the latest version of the Microsoft WebView2 Runtime from here:
[WebView2- Microsoft Edge Developer](#) Choose the installer for your OS:



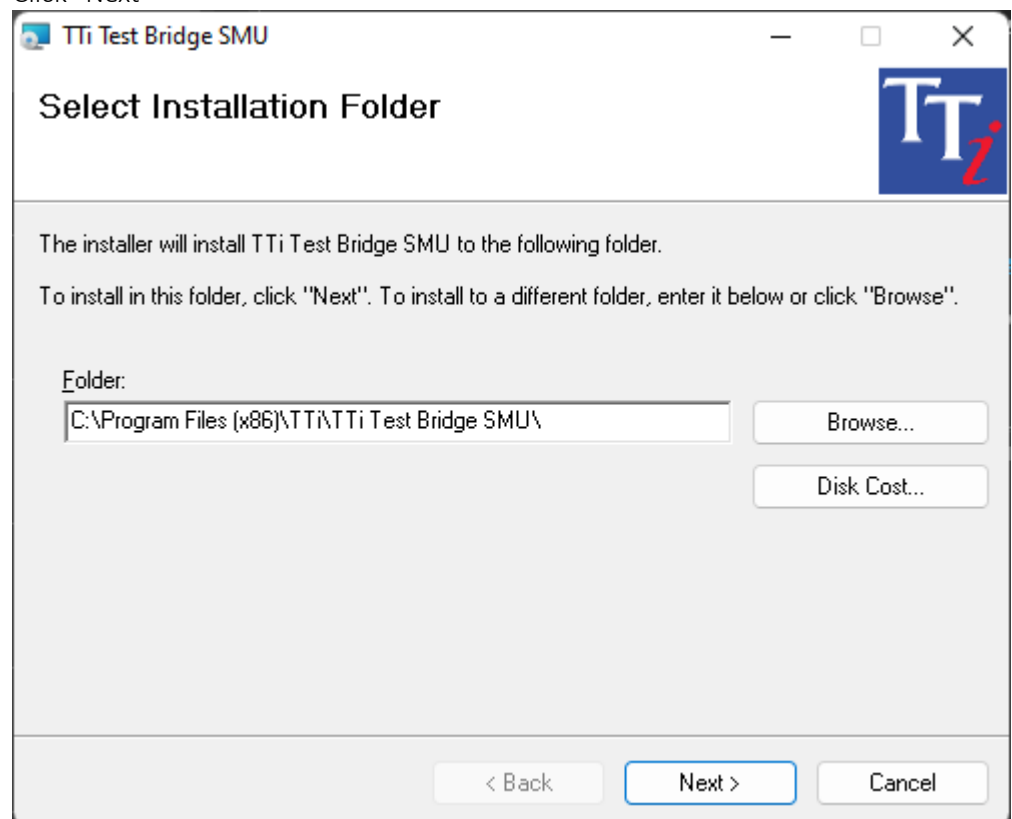
- Run the Test Bridge SMU installer
- Click "Next"



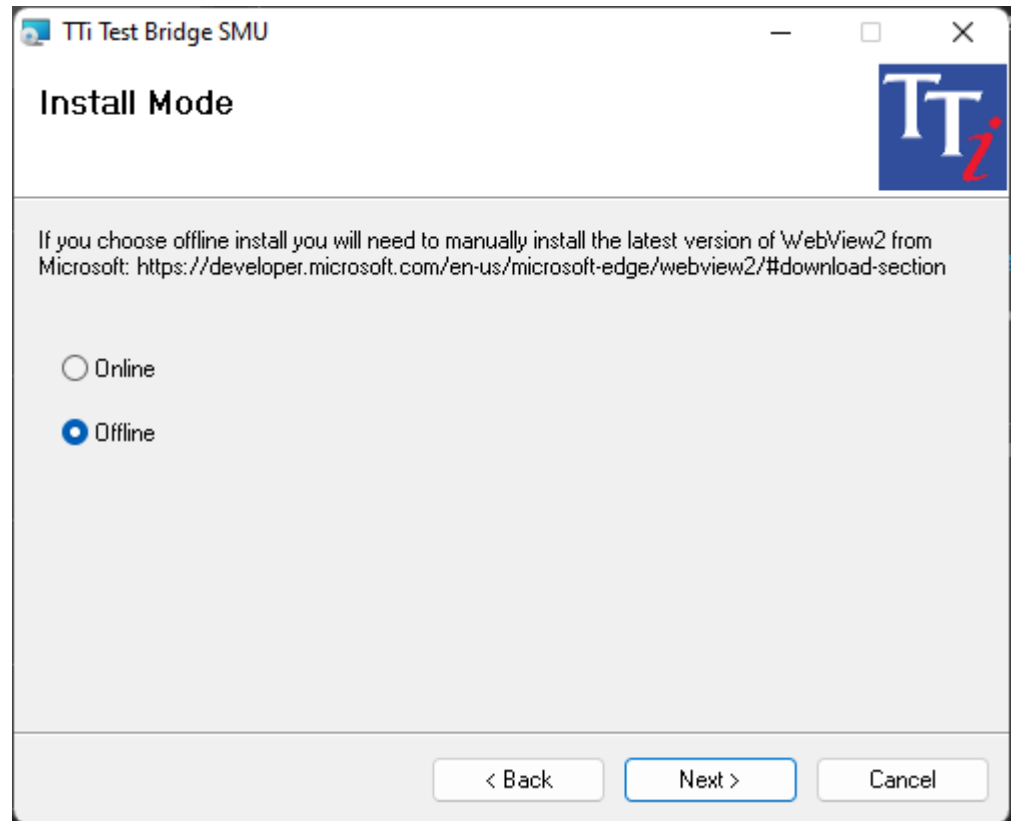
Click "Next"



Click "Next"



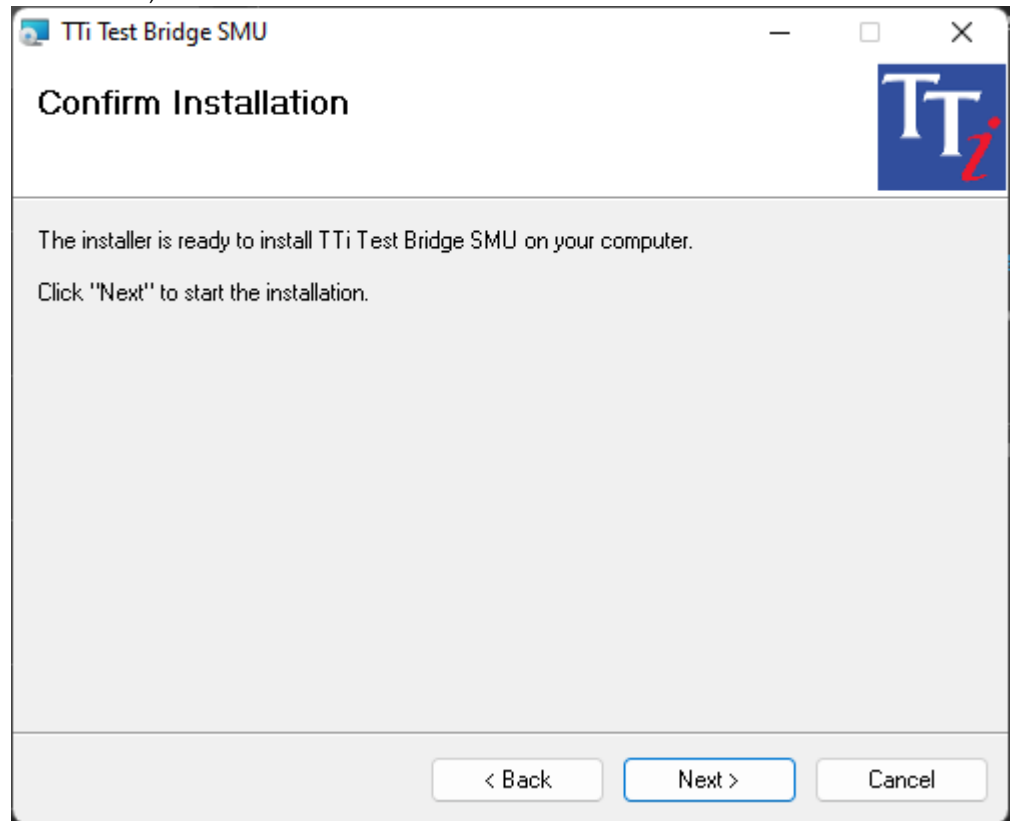
Select "Offline" and click "Next"



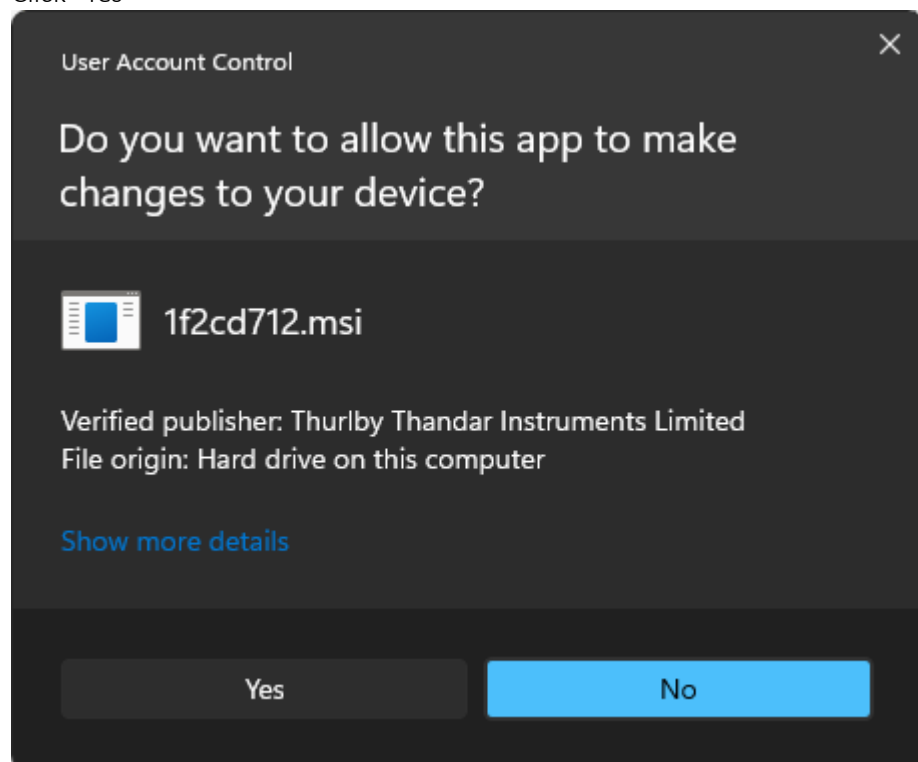
Select "I Agree" and click "Next"



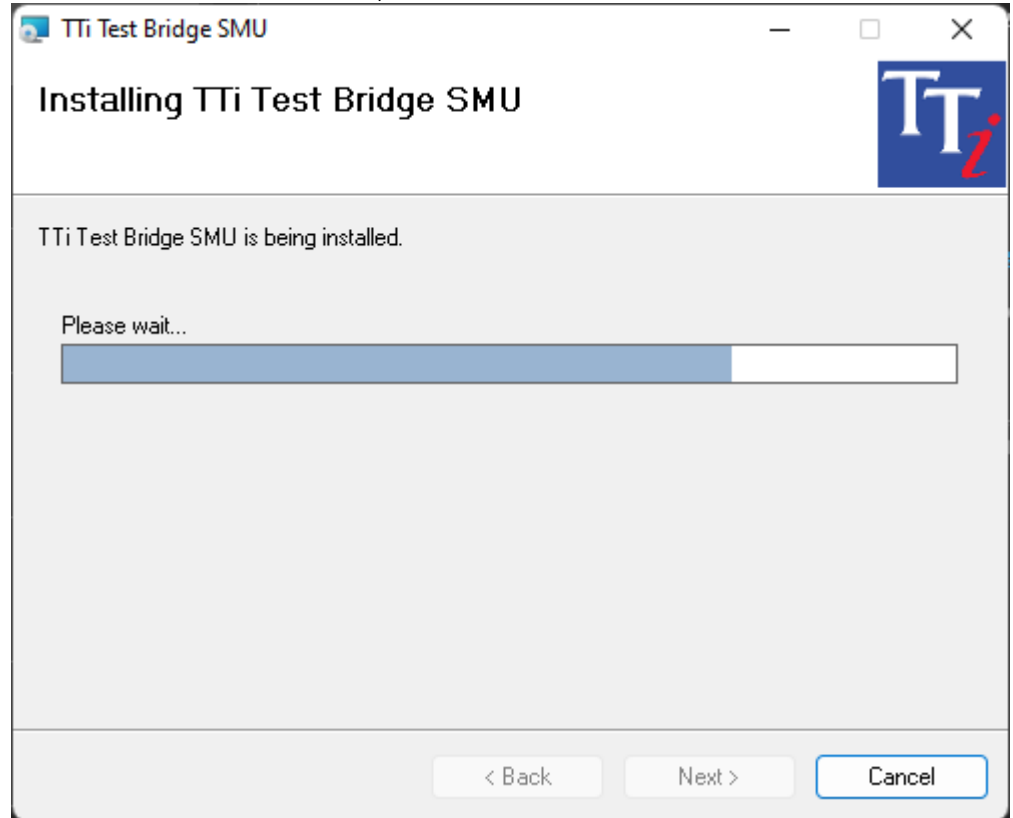
- Click "Next", this will start the installation



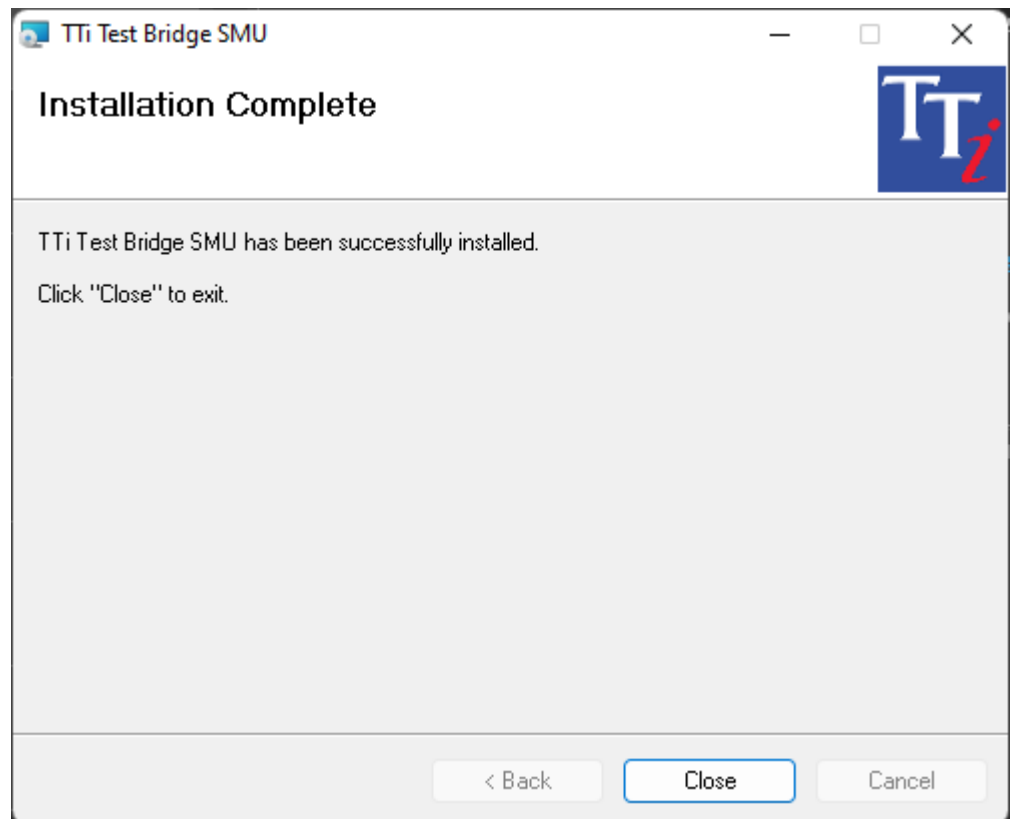
- Click "Yes"



Wait for the installation to complete



Click "Close"



Distribution in the UK & Ireland



**Characterisation,
Measurement &
Analysis**

Lambda Photometrics Limited
Lambda House Batford Mill
Harpenden Herts AL5 5BZ
United Kingdom
E: info@lambdaphoto.co.uk
W: www.lambdaphoto.co.uk
T: +44 (0)1582 764334
F: +44 (0)1582 712084